

Building on 29 years of thought leadership, the Injury & Disability Schemes Seminar will play host to:

- High-profile speakers.
- A diverse program featuring four plenary sessions and 50 concurrent sessions.
- An understanding of current critical issues and developments across various injury and disability schemes.
- The development of relationships with leaders and professionals in the industry.



**Actuaries
Institute**

Change • Challenge • Opportunity

Injury & Disability Schemes Seminar

12 - 14 November 2017 • Sofitel • Brisbane

**Register by
Friday 20 October 2017
and take advantage
of the Early Bird Discount.**

Register at www.actuaries.asn.au/IDSS2017

Plenary Speakers



David Bowen



Dr Norman Swan



Carmel Donnelly



John Nagle



Joe Calafiore



Clare Amies



Kim Birch



Mark Coyne



Geoff Atkins



Julian Williams



Eugene McGarrell



Pamela Rutledge



Tim Clark



Dr Chris Colquhoun



Hugh Miller

Keynote Speaker

David Bowen *Inaugural CEO of the NDIA*

Seminar Facilitator

Dr Norman Swan *Dr Norman Swan hosts The Health Report on the ABC's Radio National, and Tonic on ABC Television*

Plenary Speakers

Plenary 1 & 2 – **Change and Challenges**

Carmel Donnelly *Acting Chief Executive, SIRA*

John Nagle *Group Executive, Workers Insurance, icare*

Joe Calafiore *Chief Executive Officer, TAC*

Clare Amies *Chief Executive, WorkSafe Victoria*

Kim Birch *Chief Executive, CTP Insurance Regulator (SA)*

Mark Coyne *Chief Executive, EML*

Over two plenary sessions we delve into some of the major changes occurring across the various schemes, and the challenges presented. From scheme privatisation to cultural shifts focussing more around scheme participants – important transformation is underway. An impressive array of industry leaders will explore this challenging environment.

Plenary 3 – **Mental Health**

Geoff Atkins *Director, Finity Consulting*

Julian Williams *Founder, cordius and Former Partner, PwC*

Eugene McGarrell *General Manager, Health and Community Engagement, icare*

Pamela Rutledge *Chief Executive Officer, Flourish Australia*

Mental illness is a serious issue for Australian society. Each year one in five Australians will experience a mental illness, and 10,000 workers will have a serious work-related mental injury claim. The panel's participants are experts in accident compensation, mental health and disability and will explore the challenges of mental health issues for schemes and employers, and for those people with a lived experience of a mental health issue.

Plenary 4 – **Future, Technology, Innovation**

Tim Clark *Executive General Manager, IAG*

Dr Chris Colquhoun *Chief Medical Officer, icare*

Hugh Miller *Senior Actuary, Taylor Fry*

Medical and technological advancements and data analytics are some of the areas explored in this plenary session focussed on the future, and what it might bring.

* Dr Norman Swan, appears by arrangement with Saxton Speakers Bureau

Program at a Glance

Two full days of conference sessions, including morning and afternoon tea plus buffet lunch. Network (and relax) at the Cocktail Party and Gala Dinner.

Full details at: www.actuaries.asn.au/IDSS2017

Sunday 12 November 2017

Welcome Cocktail Party* 6.00pm – 9.00pm

* Generous canapés and drinks

Monday 13 November 2017

Sessions 8.30am – 5.30pm

Seated Buffet Lunch 12.25pm – 1.25pm

Gala Dinner** 7.00pm – 12.00am

** Three-course dinner, drinks and entertainment will be provided. Luau theme – embrace it!

Tuesday 14 November 2017

Sessions 9.00am – 4.35pm

Seated Buffet Lunch 12.25pm – 1.15pm

Airport Bus 4.50pm

Client Experience, Health and Social Outcomes

- Best Practice Framework for the Management of Psychological Claims in the Insurance Sector
- Enhancing Long-Term Case Management Approaches Using Behavioural Insights. Learnings from the EML Collaboration with the NSW Department of Premier and Cabinet Behavioural Insights Unit
- Embracing Technology to Assist Customers in Returning to Work
- Exercise and Mental Health
- Fighting "Fight or Flight"
- Implementing a Holistic Evidence Based Approach to Psychological Injury Management
- Introduction to Mental Health
- Meaningful Assessment of Mental Health Conditions – Is There a Better Way?
- Recalibrating Resilience
- Return to Work Coordinators: Two Pathways to Improve Return to Work Outcomes in a Workplace Intervention
- Risk Profiles of Workers' Compensation Claimants: the PACE Protocol
- The 'Dirty Dozen' – Common Claims Management Pitfalls that Impact the Bottom Line
- Who Am I? The Next Evolution of Client Risk Identification and Segmentation at the TAC

Prevention and Other Compensation Issues

- Black Lung and Coal Mines: The Experience Hidden Under the Surface
- Challenge. Inflation. Opportunity.
- Common Law and Order – A Workers' Compensation Self-Insurer's Perspective
- Injury and Disability Schemes Fraud Control Survey: Who's Really in Control?
- The Magic Pudding is Here! Dodgy Business Networks are Targeting CTP and Motor Insurance and Driving Up Costs

Scheme Design and Reform

- A Fare Share: On Ridesharing, Taxis and Their CTP Insurance
- An Investment Approach to Welfare – Applying Traditional Actuarial Techniques in New Fields
- Exploring a Role for Restorative Justice in Workers Compensation

- Financial Incentives for Employers to Report Work Injuries Sooner. Impact on Time Spent in the Claim Lodgement Process
- Insights for Success Regulating and Insuring Work Injury Insurance
- International Comparison of Compensation Scheme Benefits on Motor Accident Injuries
- Jurisdictional Comparison of CTP Schemes Around the Globe
- Living Beyond its Use-By-Date: The Limitations of the Present Framework of Workers' Compensation and Some Proposals for Change
- NSW CTP Benefit Reform Key Features and Challenges Ahead
- Nudging Better Claims Outcomes – How Can Behavioural Economics Help?
- Premium System Design – Balancing Stakeholder Needs
- Public vs Private Underwriting and Administration of Personal Injury Statutory Insurance Schemes
- Scheme Exit and Transition: An International Review
- The Future of Workers' Compensation

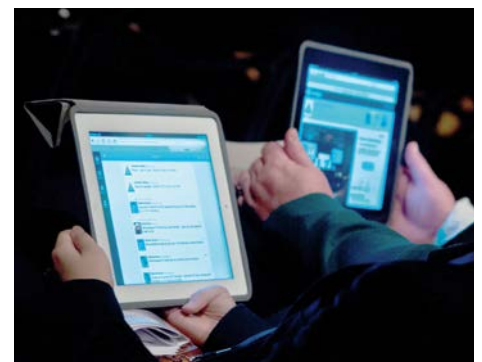
Scheme Updates

- ACT CTP Scheme Update – Deliberative Democracy Process on Scheme Design
- ACT Private Sector Workers' Compensation Scheme Performance 2015/16
- Comcare Scheme Update – Collaborative Partnership for Work Participation: Two Years On
- Lifetime Support Scheme South Australia
- Motor Accidents Insurance Board (MAIB) Tasmania – Scheme Update
- National Injury Insurance Scheme Queensland Update
- NDIS Scheme Update
- New South Wales CTP Scheme Update
- New South Wales Lifetime Care and Support Scheme Update
- New South Wales Workers' Compensation Scheme Update
- New Zealand Accident Compensation Corporation Scheme Update
- Queensland CTP Scheme Update
- ReturnToWorkSA Scheme Update
- Rolling On – The Shift from Trials to Scheme Rollout in the WA NDIS
- Tasmanian Workers' Compensation Scheme Update

- Western Australia CTP Scheme Update
- Western Australian Workers' Compensation Scheme Update
- WorkSafe Queensland Scheme Update
- WorkSafe Victoria Scheme Update

Transformation and Innovation

- Building Better PPAC Models
- How to make Workers Compensation Fit-For-Growth?
- Keep Your Eye on the Prize and Foot on the Pedal Claims Management Monitoring
- Third Party Motor Liability Catastrophe Bond
- Unlocking the Possibilities: The Productivity Commission's Inquiry Into 'Data Availability and Use' and the Implications for Injury and Disability Schemes



Be empowered by leading-edge thinking and understanding of current critical issues and developments across various disability and injury schemes.

Previous delegates
have valued...

*"A very professionally
organised conference,
excellent and relevant
content, high quality
presenters and an
exceptional facilitator."*

*"Fantastic opportunity to
hear from various Schemes
and catch up with old friends
and colleagues."*

*"The networking
opportunities were one of
the most valuable parts of
the conference."*

*"A fantastic and critically
relevant conference."*

Register at www.actuaries.asn.au/IDSS2017

Registration Information

There are a range of registration packages available including shared tickets.

Please visit www.actuaries.asn.au/IDSS2017 for more information.

Register by **20 October 2017** to take advantage of the Early Bird discount.

For further information, please contact:

Liz Gemmell, Events Manager

t +61 (0) 2 9239 6119

f +61 (0) 2 9239 6170

e events@actuaries.asn.au

w www.actuaries.asn.au/IDSS2017

 @ActuariesInst – #IDSS2017



Venue

Sofitel Brisbane Central

249 Turbot Street Brisbane QLD 4000

t +61 (0) 7 3835 3535



Accommodation

A special delegate rate has been arranged at the Sofitel Brisbane Central. Contact Pauline Zhang in Group Reservations and quote group reference **INJ121117** when making your booking.

We recommend booking early as room numbers are limited.

Booking Enquires:

Pauline Zhang, Groups Manager

t +61 (0) 7 3835 4930

e H5992-RE5@sofitel.com

Book Online:

http://www.sofitel.com/sofitel/lien_externe.svlt?goto=resa_express&code_hotel=5992&code_chaine=SOF&code_avantage=INJ17

Gold Sponsors



Building a better
working world

Silver Sponsor



Supported Charity

In support of

RUOK?
A conversation could change a life.

Bronze Sponsors



Supporting Partners

