

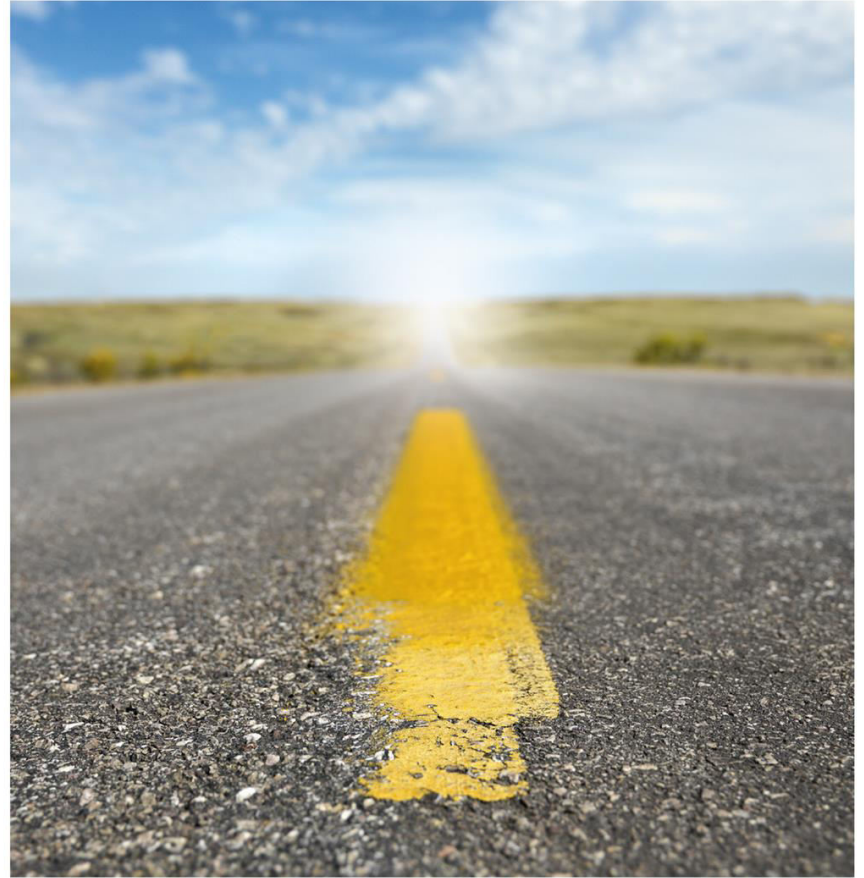
Injury Schemes Seminar

Road to Recovery



**Actuaries
Institute**

8-10 November 2015 • Hilton • Adelaide





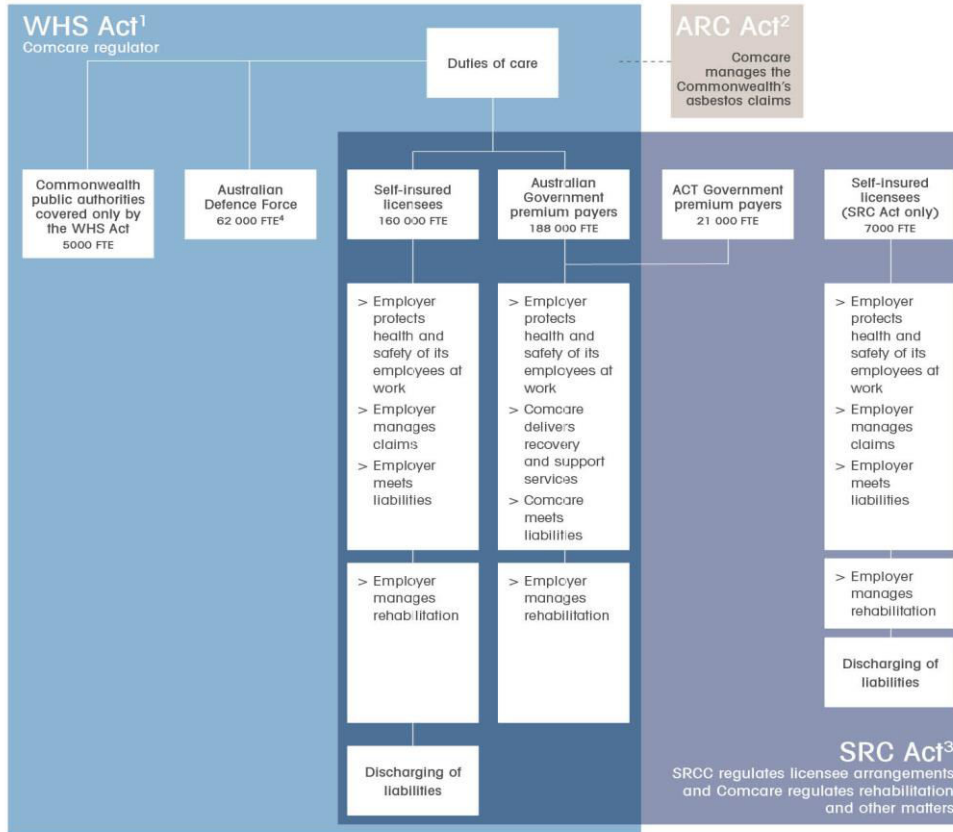
COMCARE SCHEME UPDATE

Seyram Tawia, Director Scheme Policy

© Comcare

*This presentation has been prepared for the Actuaries Institute 2015
Injury Schemes Seminar.*

*The Institute Council wishes it to be understood that opinions put forward
herein are not necessarily those of the Institute and the Council is not
responsible for those opinions.*



as at 30 June 2015

1. Work Health and Safety Act 2011.

2. Asbestos-related Claims (Management of Commonwealth Liabilities) Act 2005.

3. Safety, Rehabilitation and Compensation Act 1988.

4. Prior to the 6th edition of the Compendium, a component of the ADF had been included on a headcount basis.

375 300 FTE covered under the Safety, Rehabilitation and Compensation Act (1988)

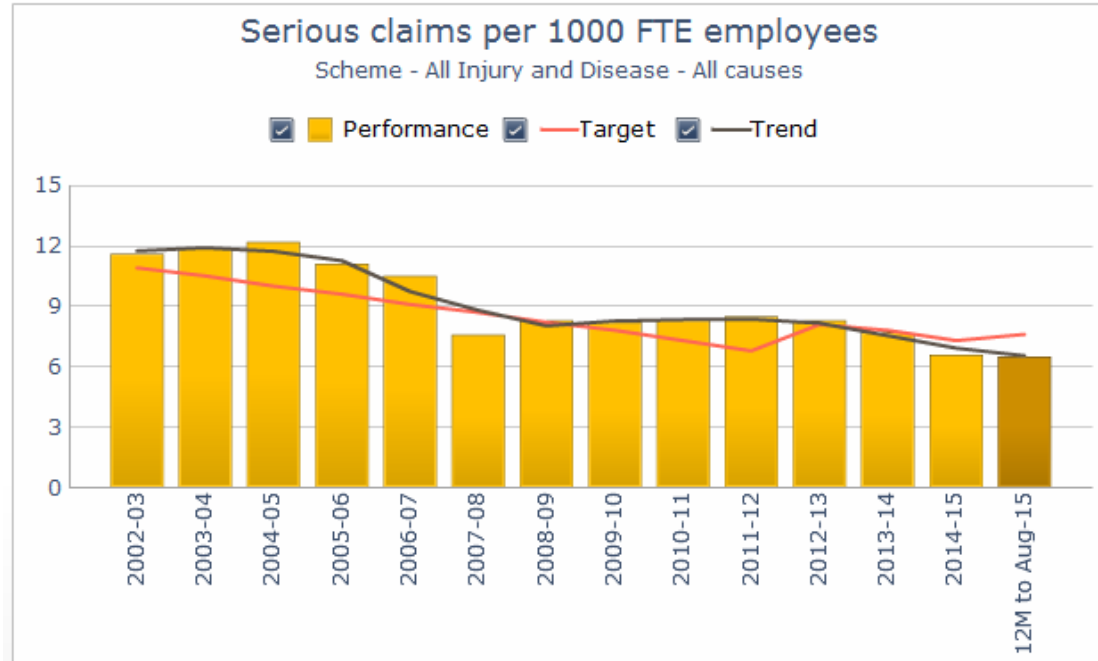
415 000 FTE covered under the Work Health and Safety Act (2011)

Incidence rates of serious injury and disease claims



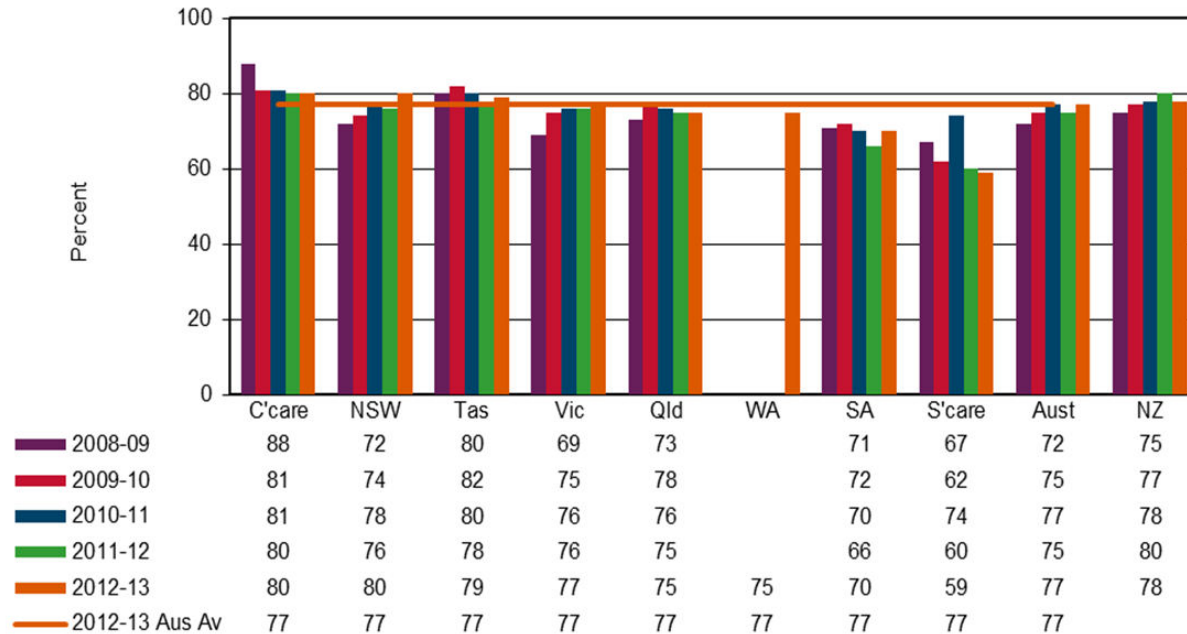
Source: 16th Edition, Safe Work Australia, Comparative Performance Monitoring Report, October 2014

Serious Claims Performance



Source: Comcare KPI Dashboard as at 22 October 2015

Return to work rates



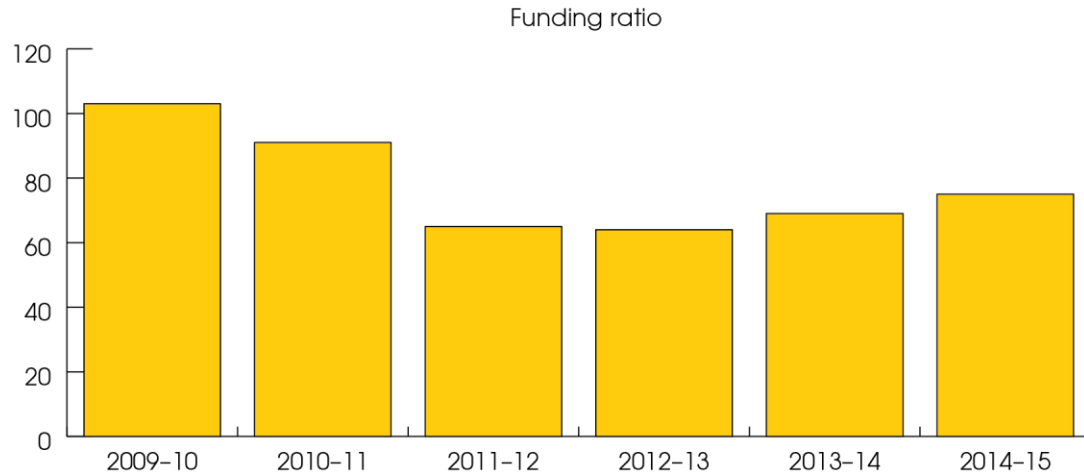
Health Benefits of Work

Comcare's Health Benefits of Work Programme is based on the principles that:

- work is generally good for mental and physical health, and wellbeing
- work can help in recovery from injury or illness
- an early, supported return to work can reduce the risk of longer term disability.



Comcare's funding ratio continues to improve



Comcare is working towards a fully funded insured scheme by 1 July 2020

Self Insurance

- Moratorium on Scheme entry lifted December 2013 with six entities declared eligible since that time.
- 33 employers currently self-insured under the Comcare Scheme with four new entities being granted licences.
- The Safety, Rehabilitation and Compensation Commission is currently reviewing its regulatory approach for licensees as part of the Government's deregulation agenda.



Legislative change

*Safety, Rehabilitation and Compensation
Legislation Amendment Bill 2014 (the **2014 Bill**)*

Eligibility for compensation and self-insurer
arrangements

Legislative change

*Safety, Rehabilitation and Compensation Amendment
(Improving the Comcare Scheme) Bill 2015 (the **Comcare
Scheme Bill**)*

Modernising the SRC Act to emphasise the vocational
(rather than medical) nature of rehabilitation services
and improve return to work outcomes under the
scheme

Legislative change

Safety, Rehabilitation and Compensation Legislation Amendment (Exit Arrangements) Bill 2015 (Bill 3)

Protecting the financial viability of the scheme by making amendments to ensure exiting scheme employers remain liable for claims liabilities relating to injuries sustained by their employees prior to exit

Next steps

- Three Bills currently before the parliament to amend the Safety, Rehabilitation and Compensation Act.
- Comcare is continuously working to identify, validate and implement better practice initiatives without the need for legislative change.





Questions?

Seyram Tawia

Director Scheme Policy

03 9627 5433

tawia.seyram@comcare.gov.au