

12th Accident Compensation Seminar 2009 Rising to the Challenge

Melbourne 22nd – 24th November 2009



Institute of Actuaries of Australia



Queensland CTP Scheme Update

Kim Birch

Motor Accident Insurance Commission



Introduction

- Scheme refresher
- CTP Qld Premiums
- Frequency & Claim Size
- Claim Stats
- Horizon
- Research

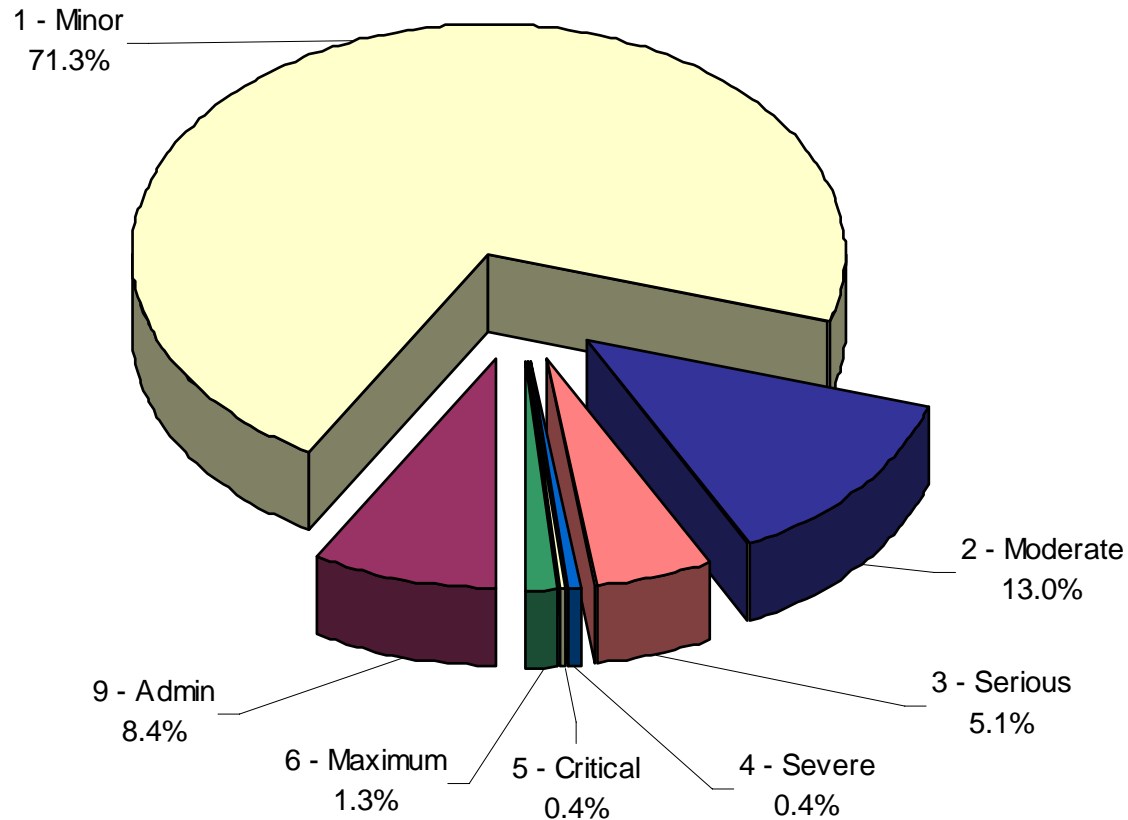


Scheme Refresher

- MAIC – Regulator
- Private Sector Underwritten – 6 licenses
- Annual Premium Pool - \$998M
- No. of Registered Vehicles – 3.4M
- Fault-based, modified common law
- No. of Claims per Year – 6,500 approx



Qld CTP Scheme Injuries





Balance

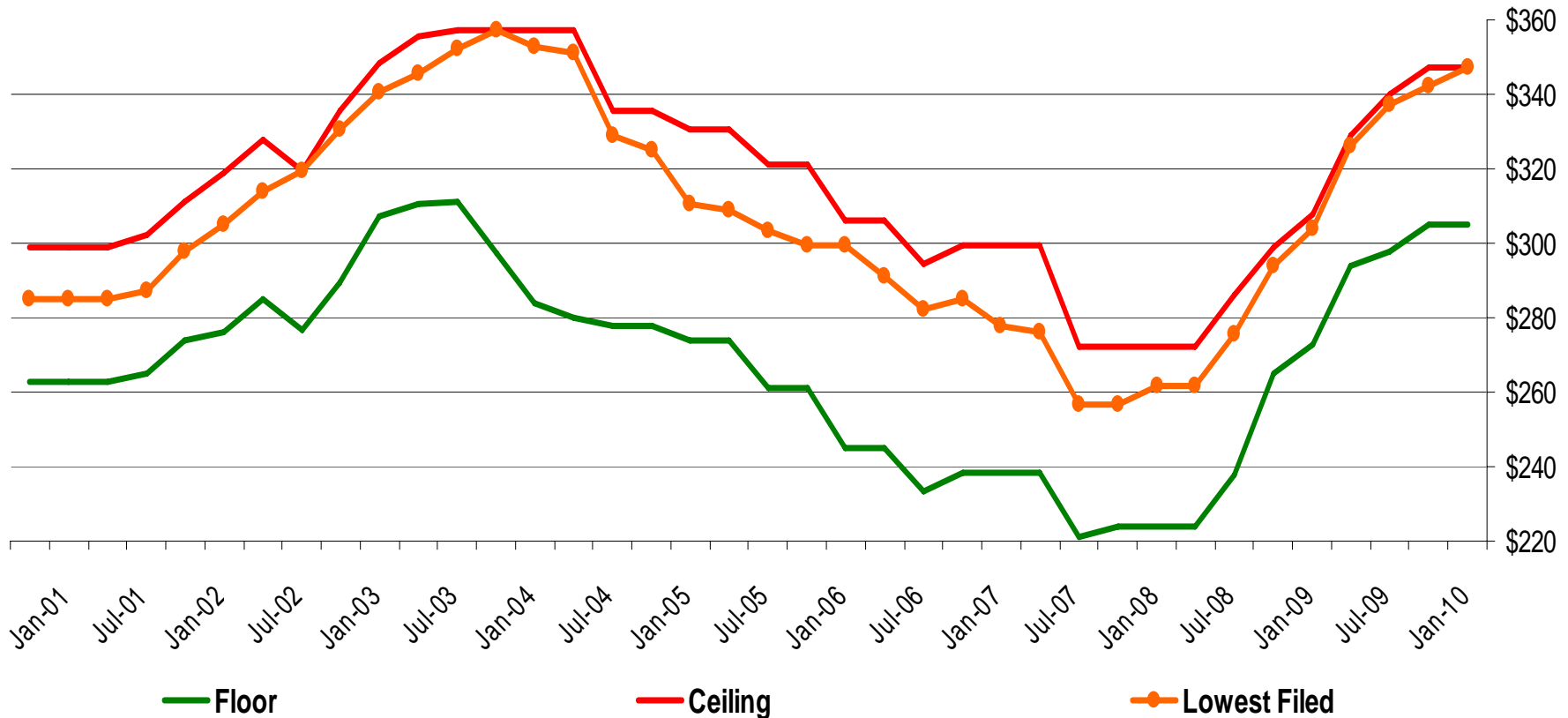


- Premium affordability v. Compensation to those injured
- *Motor Accident Insurance Act* – 2000 amendments
- *Civil Liability Act 2003*
- General Damages - whiplash claims
 - Pre CLA approx \$21,000 / CLA approx \$7,500



Queensland Lowest Filed Premium

Class 1 - Cars & Station Wagons



12th Accident Compensation Seminar 2009

Rising to the Challenge

Melbourne 22nd – 24th November 2009

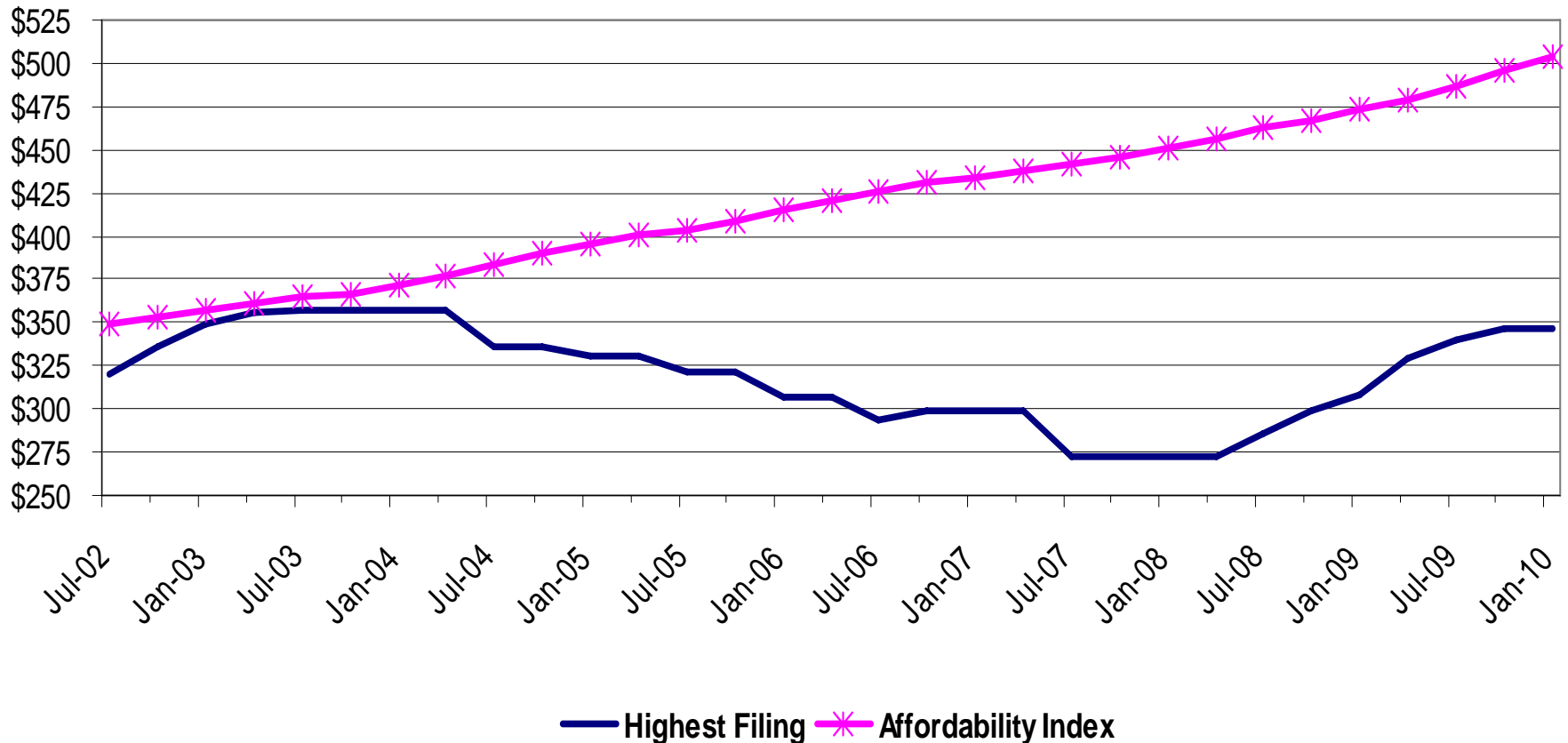


Institute of Actuaries of Australia



Affordability Index

Affordability Index vs Highest Filed Class 1 CTP Premium



12th Accident Compensation Seminar 2009

Rising to the Challenge

Melbourne 22nd – 24th November 2009

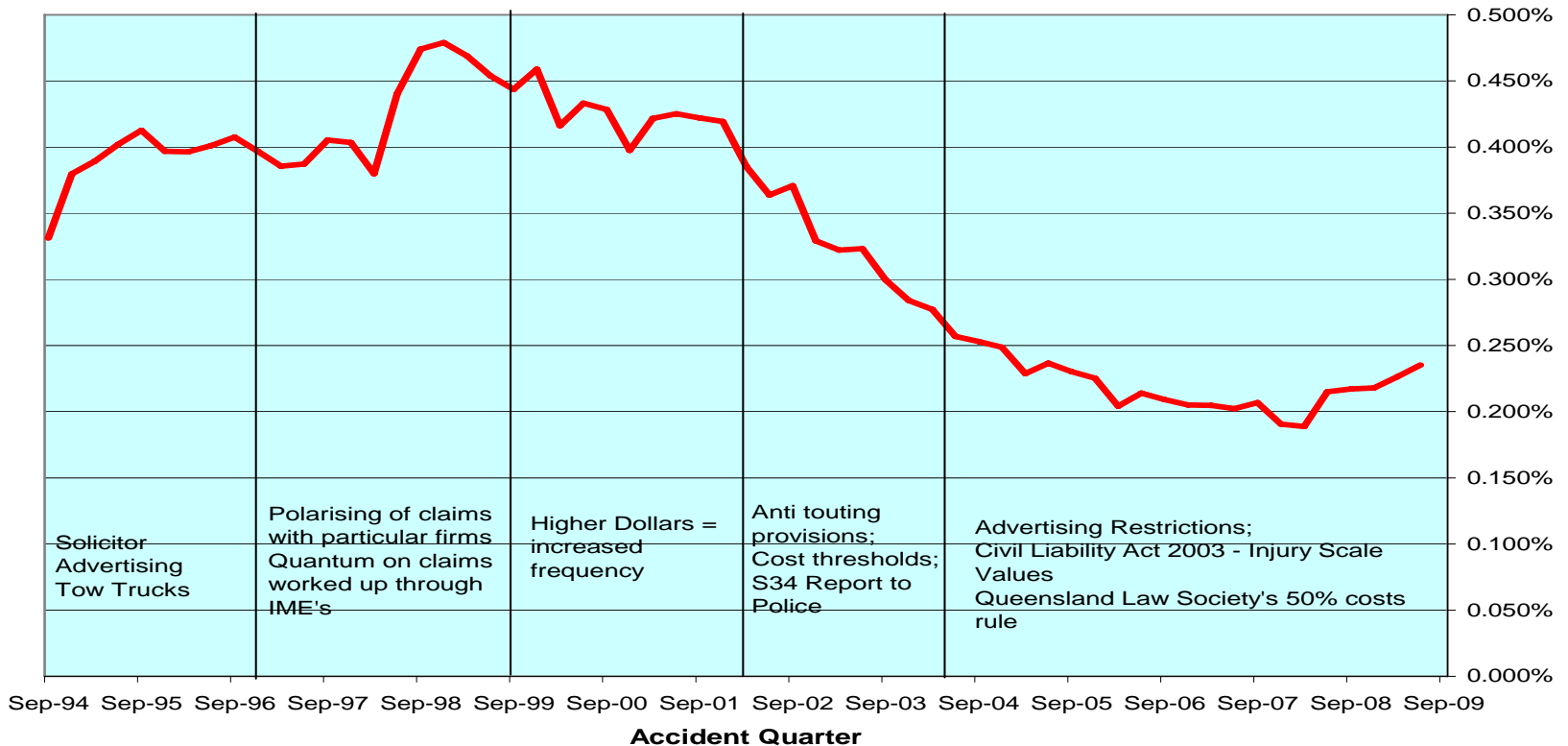


Institute of Actuaries of Australia



Claim Frequency

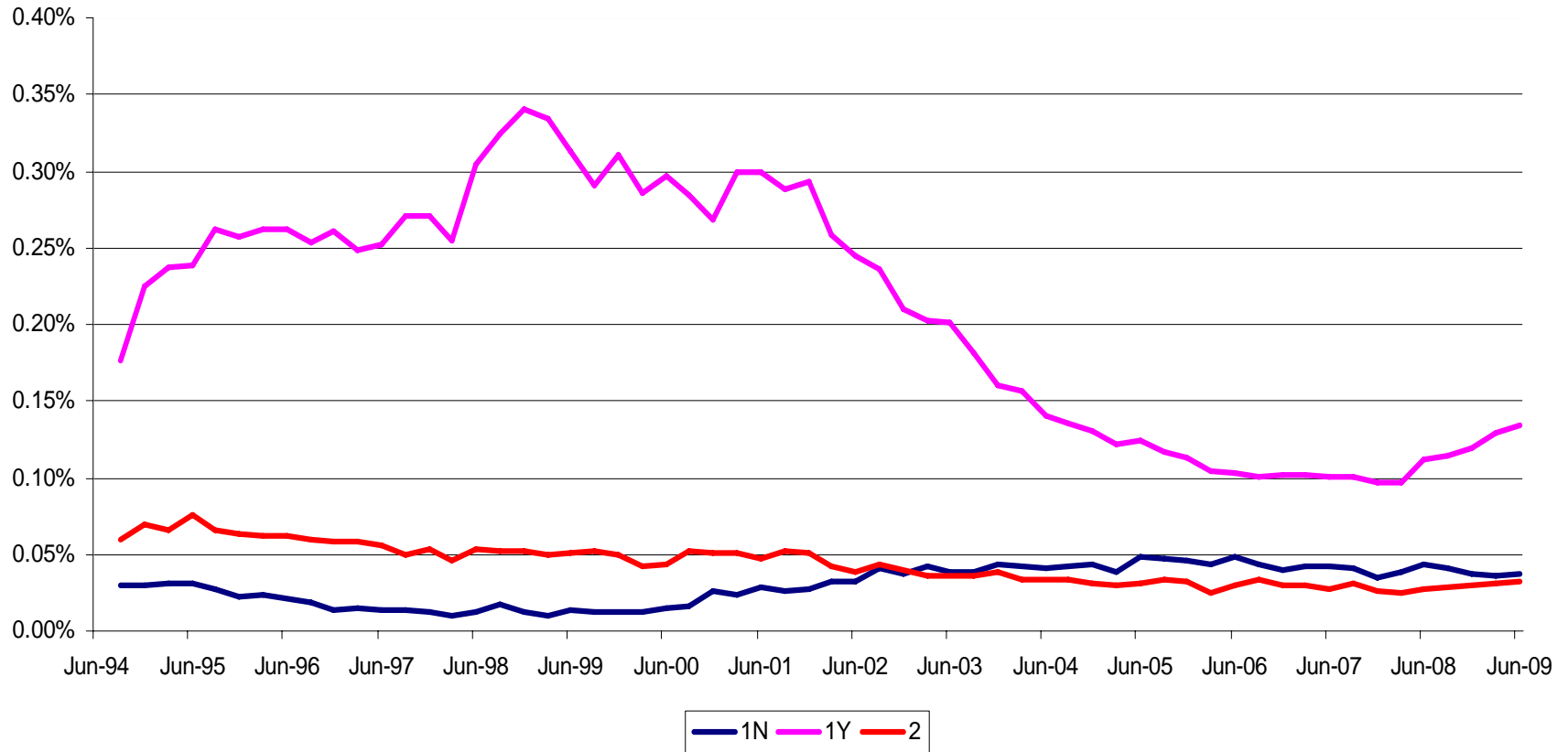
Ultimate Claim Frequency





Severities 1N, 1Y & 2

Claim frequencies by severity



12th Accident Compensation Seminar 2009

Rising to the Challenge

Melbourne 22nd – 24th November 2009

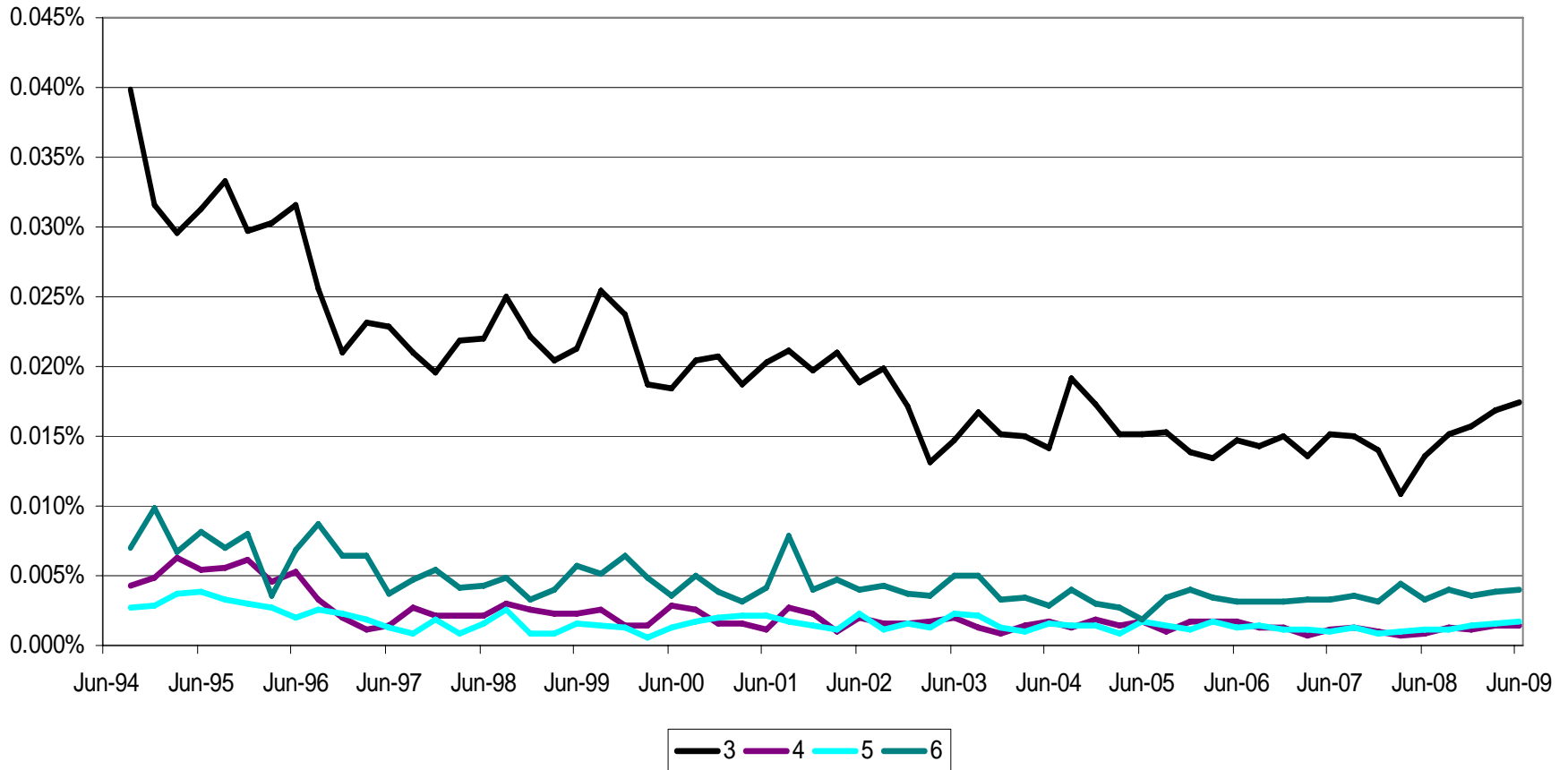


Institute of Actuaries of Australia



Severities 3 to 6

Claim frequencies by severity



12th Accident Compensation Seminar 2009

Rising to the Challenge

Melbourne 22nd – 24th November 2009

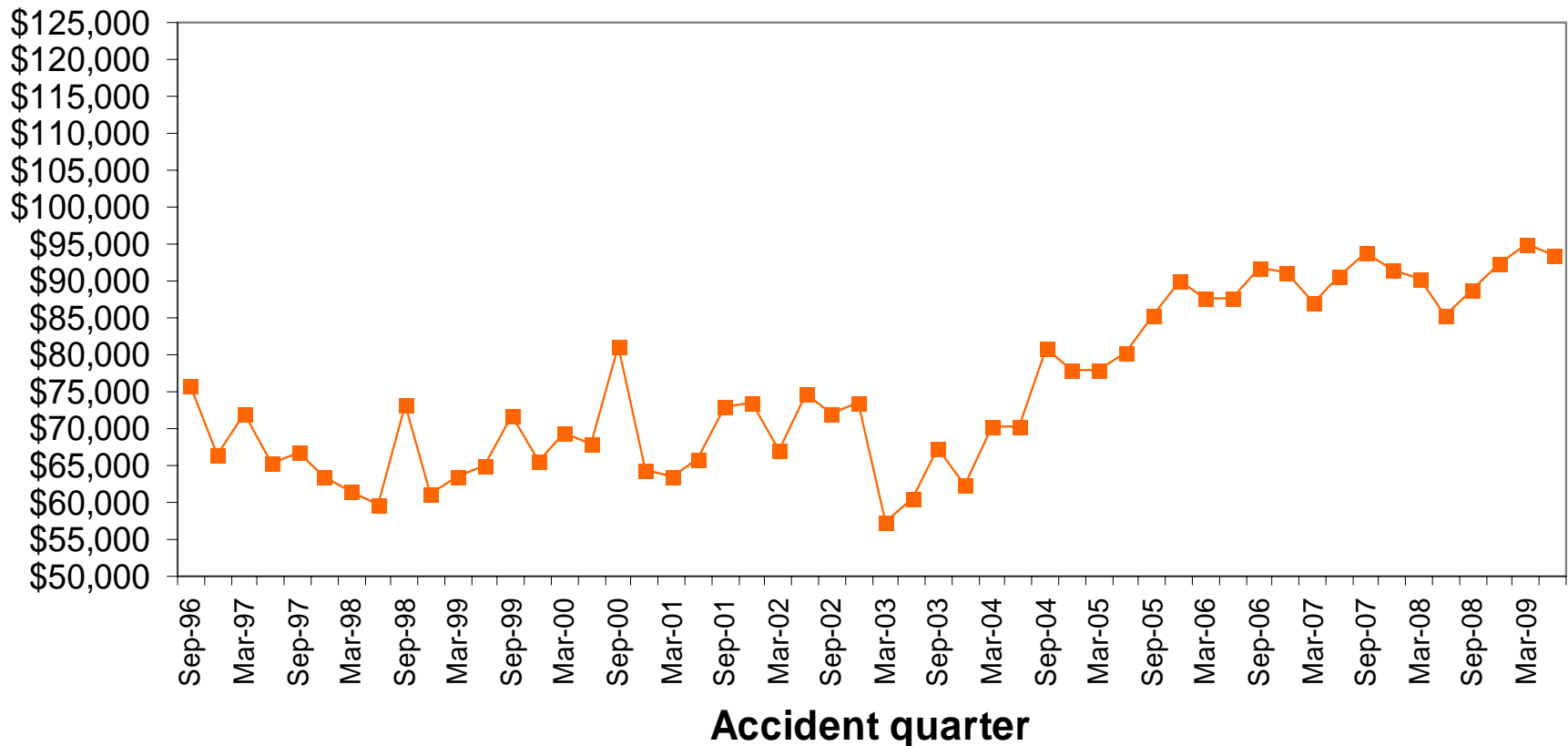


Institute of Actuaries of Australia



Average Claim Size

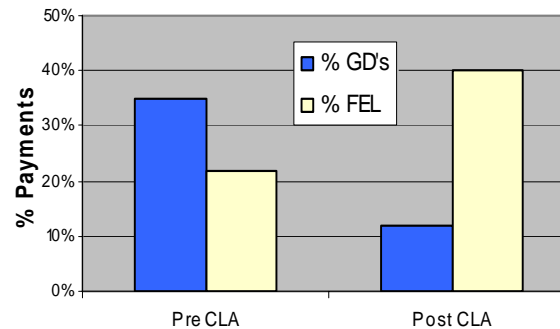
Average claim size in 30 June 2009 dollars



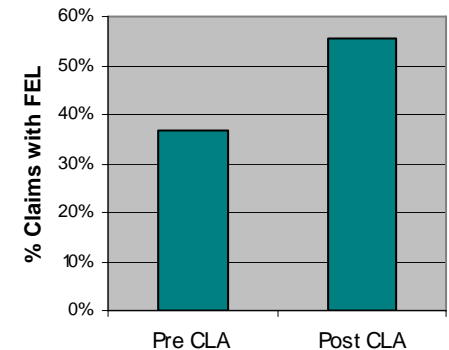
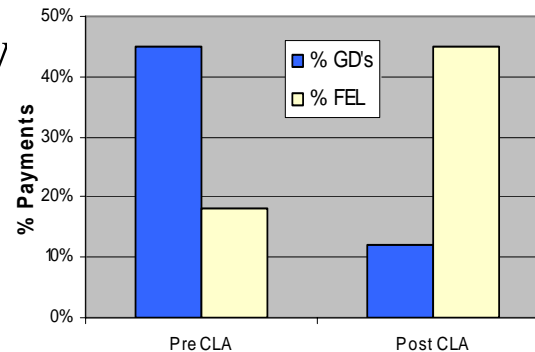


Elements that impact on Premium

- Claim Size – FEL
 - All Severities



- soft tissue injury (severity 1) & legally represented (1Y)





CTP Claim Stats

- Settlements

% Settled prior to CC	79.38%
% Settled at CC	12.81%
% Litigated	3.56%
% Court	0.13%

- % legally represented:

- Pre CLA – low 90's & Post CLA – mid to high 70's



Horizon

- Civil Liability and Other Legislation Amendment Bill 2009
- Lifetime Care & Support



Research Funding

- Centre for Accident Research & Road Safety- Queensland (CARRS-Q)
- Centre of National Research on Disability and Rehabilitation Medicine (CONROD)



CONROD Programs

- Acute Trauma
- Medical and Allied Health Rehabilitation
- Health Economics
- Social and behavioral science
- Vocational and Community Rehabilitation

Specific projects

- Claimant survey
- Prospective longitudinal outcome studies



Whiplash initiatives

- Website on whiplash - www.som.uq.edu.au/whiplash
 - Consumer focused
 - Evidence base for interventions + Rating
- Whiplash booklet – self-management guide
- Chronic Whiplash study – MAA, MAIC NHMRC
- ARC Linkage on predicting outcomes following Whiplash injury
- Dry needling in chronic Whiplash – MAIC, NHMRC



Further Information – Qld

- *www.maic.qld.gov.au*
- *Statistical Reports 6 monthly*
- *Annual Report*
- *Research centres*
 - *www.conrod.uq.edu.au*
 - *www.carrsq.qut.edu.au*